

Care-of-the-Elderly Physicians in Edmonton – Contributing to the Care for Older Persons

Jean Triscott, MD; Lesley Charles, MBChB; Bonnie Dobbs, PhD; Marjan Abbasi, MD; Sheny Khera, MD; Jed Shimizu, MD; Karenn Chan, MD; Peter Tian, MD, MPH
 Division of Care of the Elderly, Department of Family Medicine, University of Alberta

**Patient or Caregiver
 Requiring Geriatric Services**

U S U A L W A I T T I M E f o r G e r i a t r i c S e r v i c e s

Outpatient Geriatric Assessment Services
 Patient receives geriatric services.



INNOVATIVE RESPONSES TO EMERGING NEEDS

Seniors Community Hub

Patients are seen in a PCN-based geriatric evaluation and management service.

Geriatric Consult Team in

Home Living & Supportive Living – Edmonton Zone

Patients are seen at the facilities.

Geriatric Evaluation and Management in the Emergency Department (ED)

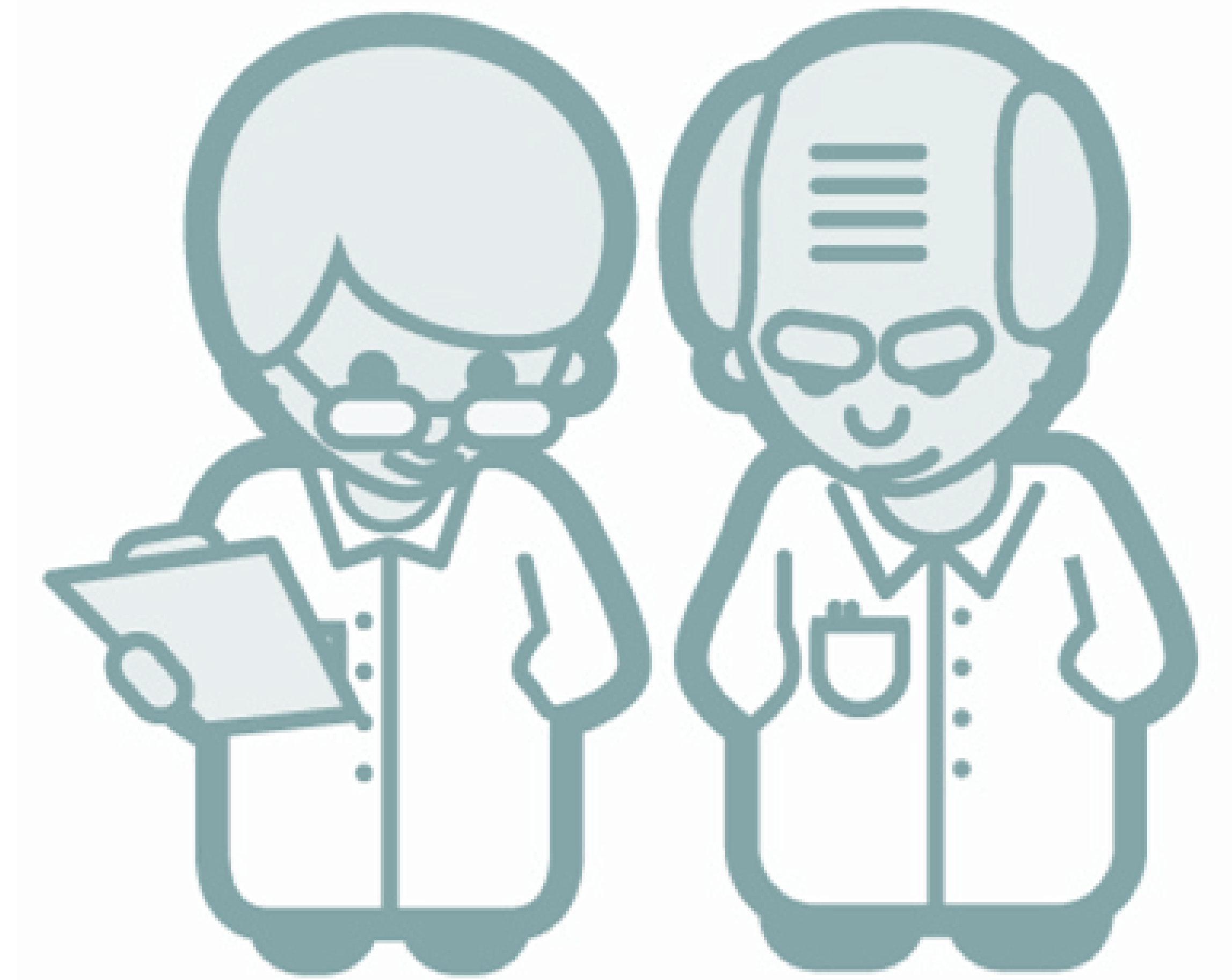
Patients receive geriatric services in the ED.

Inpatient Units and Inpatient Consults

Patients receive geriatric services in the hospital through geriatric units or geriatric consults.

Telehealth for Northern Alberta

Consultations through telehealth.



The innovative care pathways for older persons in Edmonton and surrounding areas are *Collaborative, Accessible, and Responsive*.

Collaborative

- Collaboration between family physicians trained in Care of the Elderly (COE) and geriatricians from Internal Medicine
- Other disciplines: Geriatric psychiatry, rehabilitation medicine
- Community Organizations: Alzheimer Society of Alberta and NWT; Alberta Caregivers Association

Accessible

- Over 30 COE physicians and geriatricians in 14 sites in Edmonton and surrounding areas.
1. Fort Saskatchewan
 2. Glenrose Rehabilitation Hospital
 3. Grey Nuns Community Hospital
 4. Home Living Geriatric Consult Team
 5. Leduc Primary Care Network
 6. Misericordia Community Hospital
 7. Northeast Community Health Centre
 8. Royal Alexandra Hospital
 9. St. Albert and Sturgeon PCN
 10. Supportive Living Geriatric Evaluation & Management
 11. University of Alberta Seniors Clinic
 12. Westview Health Centre

Responsive

- Capacity Building
 - * Training Specialists: Over 60 COE physicians since 1993, CFPC-accredited COE diploma program; Certificate of added competence – CCFP (COE)
 - * Training future physicians (undergraduate and postgraduate medical education)
- Clinical Research and Quality Assurance
- Program Evaluation