

Gender differences in youth Adverse Childhood Experience scores: Exploring implications in a concurrent program

Margot Crane, MC, RSW, RPsych

Rebeccah Marsh, PhD

Bina Nair, MD FRCPC



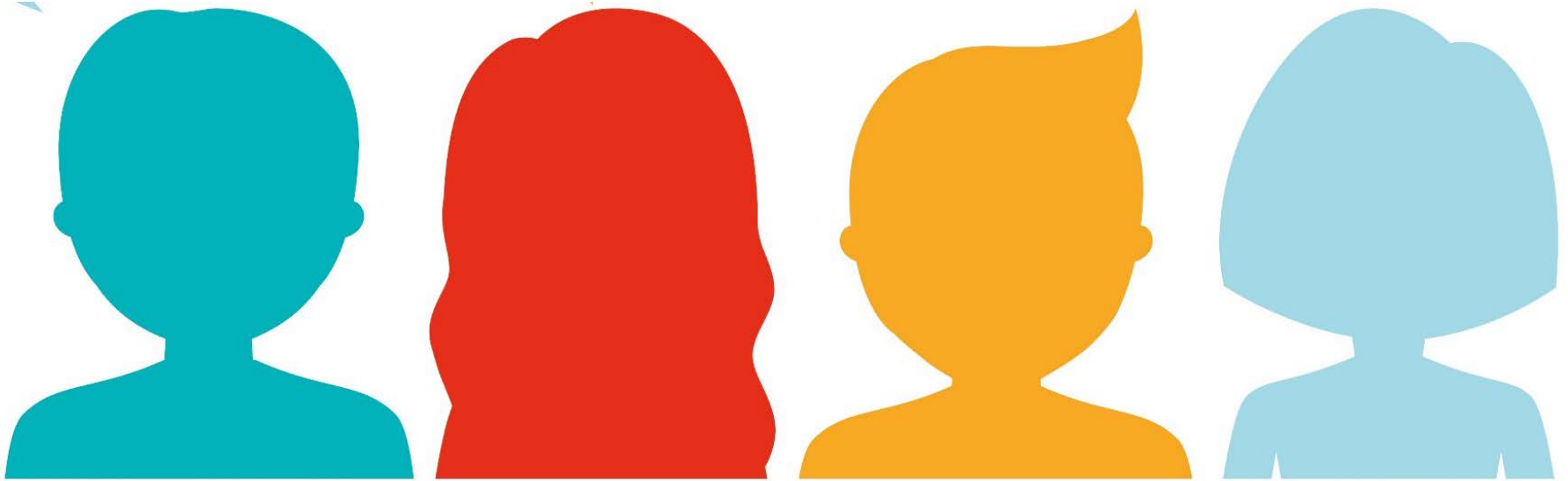
Faculty/Presenter Disclosure

- **Faculty/Presenters:**
 - Margot Crane, MC, RSW, RPsych
 - Rebeccah Marsh, PhD
 - Bina Nair, MD FRCPC
- **Relationships with commercial interests:**
 - Not applicable

CASA Child, Adolescent and Family Mental Health

- Concurrent Addiction and Mental Health Program (CAMP):
 - For youth under 18 years
 - Treatment is family-centred, multi-disciplinary, trauma-informed
 - Grounded in a harm reduction philosophy
 - Goal is to help youth replace unhealthy coping strategies with healthy behaviours

Who is joining us today?



Adverse Childhood Experiences (ACEs) Study

- 10-year study in the 1990s
- 17,000 participants
- Looked at impact of adverse childhood experiences on many aspects of health over the lifespan

Research Article

Relationship of Childhood Abuse and Household Dysfunction to Many of the Leading Causes of Death in Adults

The Adverse Childhood Experiences (ACE) Study

Vincent J. Felitti, MD, FACP, Robert F. Anda, MD, MS, Dale Nordenberg, MD, David F. Williamson, MS, PhD, Alison M. Spitz, MS, MPH, Valerie Edwards, BA, Mary P. Koss, PhD, James S. Marks, MD, MPH

ABUSE



Physical



Emotional



Sexual

NEGLECT



Physical

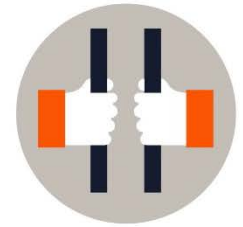


Emotional

HOUSEHOLD DYSFUNCTION



Physical



Incarcerated Relative



Mother Treated Violent

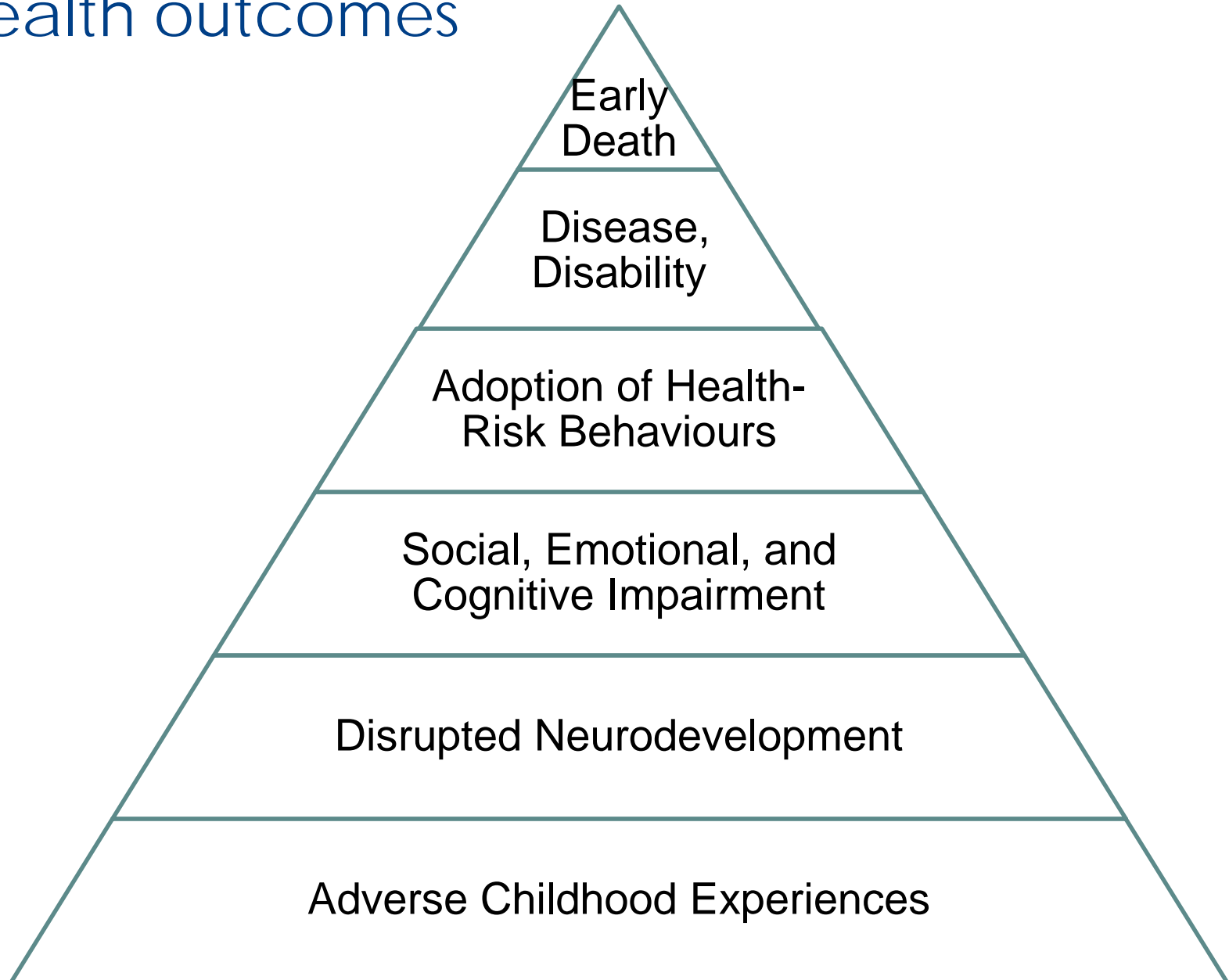


Substance Abuse

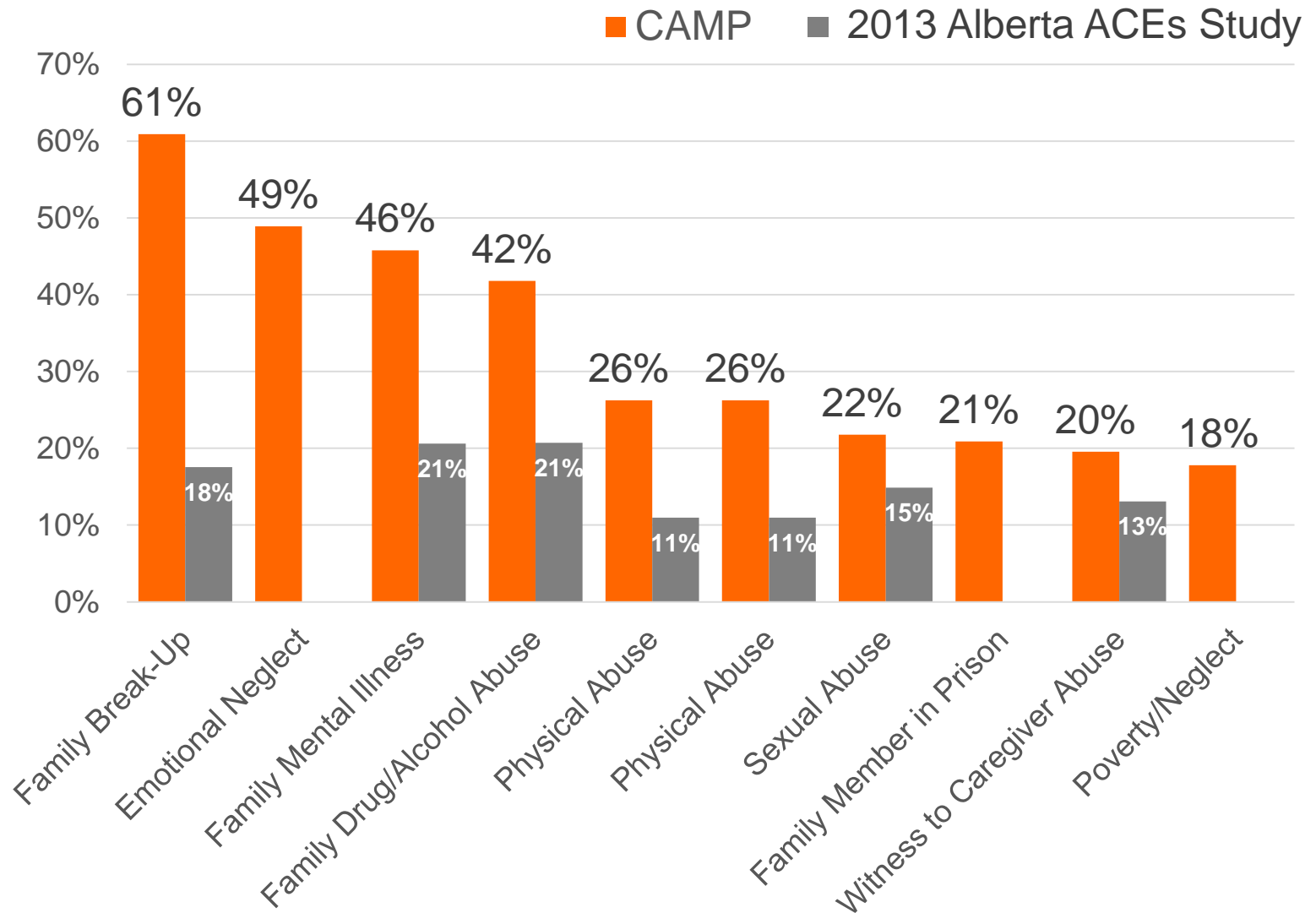


Family Break-up

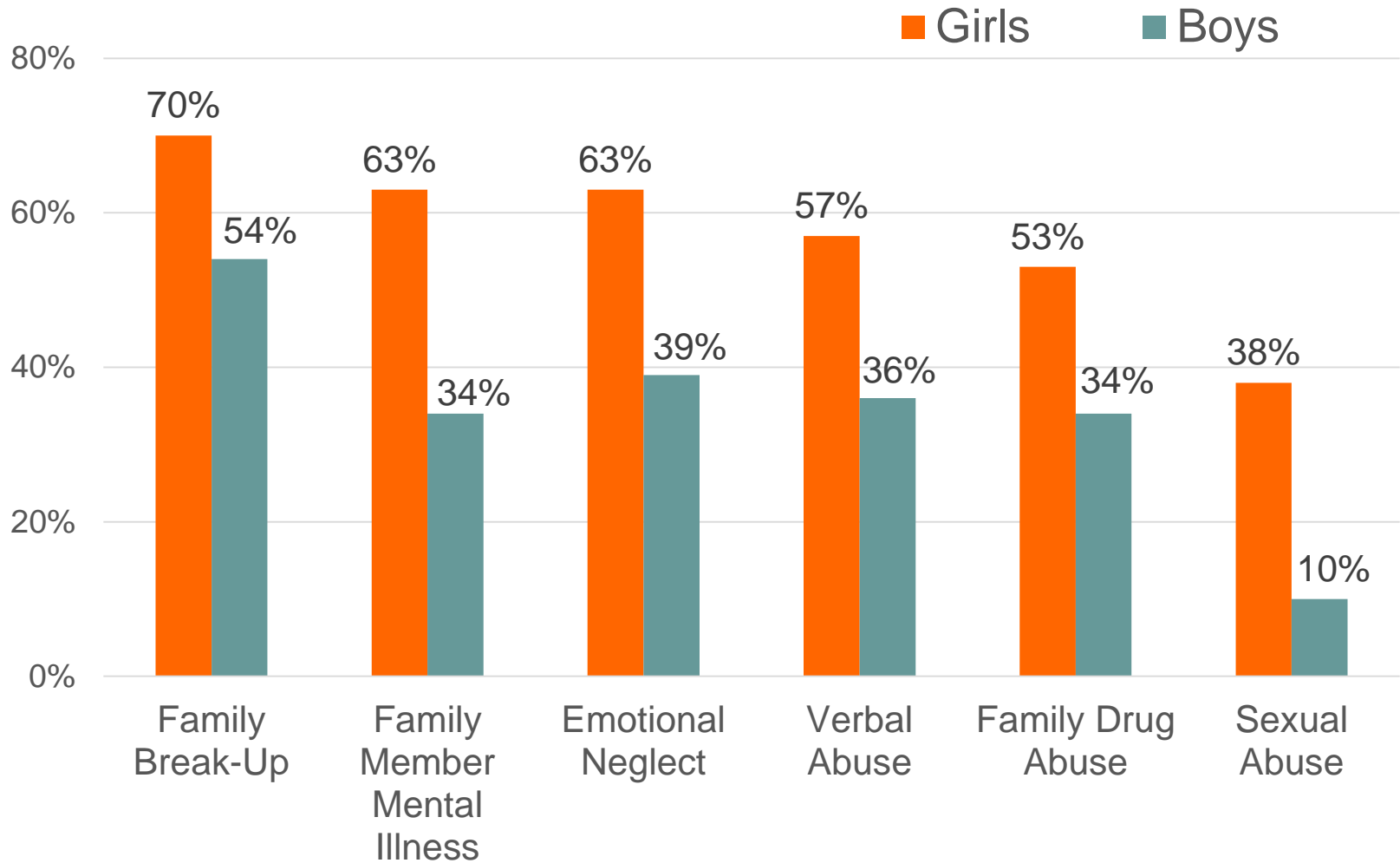
ACEs are associated with poorer lifelong health outcomes



Youth self-report of ACEs at admission to CAMP



Girls self-report a higher prevalence than boys



All significantly different ($p < 0.05$)

Girls in CAMP are more likely to report higher total ACE exposure

61%

report
4+ ACEs

Girls

34%

report
4+ ACEs

Boys

Higher ACE score in CAMP is associated with:

- Higher severity of mental health symptoms
- Diagnosis of depression
- Diagnosis of substance abuse disorder
- Total number of diagnoses

- Not associated with diagnosis of ADHD or anxiety

How this informs our practice



Reflection

